



im

intermezzo

SPRING SUMMER 2025
COLLECTION



At **Intermezzo**, our mission is to create designs that empower dancers to express themselves and connect with their true essence. The **Spring Summer 2025 collection** is inspired by a **dynamic fusion of movement and energy**, offering every dancer the freedom to embrace their creativity and shine both in everyday life and on stage.

Camellia Collection. Timeless elegance in every piece. Soft shades and graceful designs, inspired by camellias, bring classic beauty to every dancer's movement.

Petite Fleur. Delicate floral motifs bloom across this collection, bringing a touch of poetry to every piece. Lightweight fabrics and graceful designs make Petite Fleur perfect for ballerinas who love subtle elegance.

Sweet Twist Collection. Twisted patterns bring vibrant energy to every performance. Designed for dancers of all styles who embrace flair, creativity, and versatility.

Eclipse Collection. Inspired by the curves and shadows of an eclipse, this collection features flowing shapes and deep, blended colors. Its bold designs evoke the beauty and mystery of celestial forms.

Bamboo Collection. Now with new colors and models, this collection provides natural comfort. Soft bamboo fibers keep dancers cozy while connecting them to nature.

Charming Braid. Soft, cozy, and perfect for warming up. The braided-stitch design adds a touch of elegance, blending comfort with style in classic dancewear.

Finally, we are introducing new colors to our **Adel Collection** and a **new bag**, perfect for offering the essentials every dancer needs in a fresh new style.

As a final note, we would like to thank the Barcelona Dance Center and their entire team for generously allowing us to use their space.



Camellia
collection

31704



Fortunata

31704

Maillot de tirantes finos con escote en V combinado con blonda floral en la espalda y escote. Abertura en la espalda. Forro delantero de tacto suave.

Thin-strapped leotard with a V-neckline, featuring floral lace on the back and neckline. Design with open back. Soft-touch front lining.



37	
52	
108	
275	

COMPOSITION:

Meryl 92% Polyamide Meryl
8% Elastane

SIZES: 8-10-12-XS-S-M-L-XL-XXL

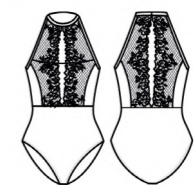


Francesca

31705

Maillot sin mangas combinado con blonda floral a tono en escote y espalda. Cerrado con corchete y abertura en el escote. Forro delantero de tacto suave.

Sleeveless leotard with matching floral lace on the front and back. Back buttoned with a hook and eye and open neckline. Full front soft lining.



37	
52	
108	
275	

31705

COMPOSITION:

Meryl 92% Polyamide Meryl
8% Elastane

SIZES: 8-10-12-XS-S-M-L-XL-XXL

CAMELLIA COLLECTION 7



31706



Fabiola

31706

Maillot de tirante grueso combinado con blonda foral en la espalda y escote. Forro delantero de tacto suave.

Thick-strap leotard with matching floral lace details on the back and neckline. Full front soft lining.



37	
52	
108	
275	

COMPOSITION:

Meryl 92% Polyamide Meryl
8% Elastane

SIZES: 8-10-12-XS-S-M-L-XL-XXL



31707
7007



Fina

31707

Maillot de cuello caja sin mangas combinado con blonda floral en los hombros y el la espalda. Espalda abierta. Forro delantero de tacto suave.

Sleeveless leotard with a round neckline and floral lace on the shoulders and back. Open-back design. Full front soft lining.



37	
52	
108	
275	

COMPOSITION:

Meryl 92% Polyamide Meryl
8% Elastane

SIZES: 8-10-12-XS-S-M-L-XL-XXL



31704
7011



Fidelia

7011

Falda cruzada con cinta para anudar. Estilo entallado por encima de la rodilla.

Wrap skirt with tie closure. Fitted style above the knee.



02

37

108

TALLA / SIZE 7012 FLOR	4	6	8	10	12	XS	S	M	L	XL	XXL		
Largo / Length (cm.)	(delante/front)		23	26	29	32	36	37	38	39	40	41	42
	(detrás/back)		26	30	34	37	43	44	45	46	48	49	50

COMPOSITION:

GISELLE 100% Polyester

SIZES: 4-6-8-10-12-XS-S-M-L-XL-XXL

Petite Fleur collection



31708



Florinda

31708

Maillot de tirante fino combinado con tul estampado floral a tono en escote y espalda. Forro delantero de tacto suave.

Thin-strap leotard with matching floral printed tulle at the neckline and back. Full front soft lining.



15

37

260

COMPOSITION:

Meryl 92% Polyamide Meryl
8% Elastane

SIZES: 8-10-12-XS-S-M-L-XL-XXL



31709



Felicity

31709

Maillot de manga corta combinado con tul estampado floral a tono en el escote, espalda y mangas. Forro delantero de tacto suave.

Short-sleeve leotard with matching floral printed tulle at the neckline, back and sleeves. Full front soft lining.



15	Blue
37	Black
260	Purple

COMPOSITION:

Meryl 92% Polyamide Meryl
8% Elastane

SIZES: 8-10-12-XS-S-M-L-XL-XXL

PETITE FLEUR COLLECTION 17

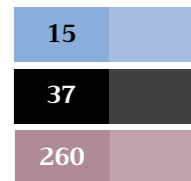


Frida

31710

Maillot de manga 3/4 con escote cerrado y tul floral estampado en el escote, espalda y mangas. Abertura en la espalda cerrada con corchete. Forro delantero suave.

3/4 sleeve leotard with a round neckline and floral printed tulle on the neckline, back and sleeves. Open back style buttoned with a hook and eye. Full front soft lining.



31710
2041

COMPOSITION:

Meryl 92% Polyamide Meryl
8% Elastane

SIZES: 8-10-12-XS-S-M-L-XL-XXL

PETITE FLEUR COLLECTION 19



Flor

7012

Falda de tul con estampado floral y cinturilla elástica

Floral-printed tulle skirt with an elastic waistband



Fiore

6645

Top de manga larga ajustado, confeccionado en tul estampado floral.

Fitted long-sleeve top made of floral printed tulle.

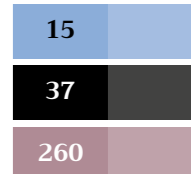


TALLA / SIZE 7012 FLOR		8	10	12	XS	S	M	L	XL	XXL
Largo / Lenght (cm.)	(delante/front)	22	24	25	27	28	29	30	31	32
	(detrás/back)	26	27	28	31	32	33	34	35	36

COMPOSITION:

Red 90% Polyamide
10% Elastane

SIZES: 8-10-12-XS-S-M-L-XL-XXL



Eclipse collection



31702
7012

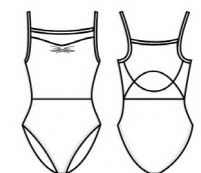


Federica

31702

Maillot de tirante fino combinado con red a tono en el escote y la espalda. Con fruncido en el escote. Forro delantero de tacto suave.

Thin-strapped leotard combined with matching mesh at the neckline and back. Front pinch. Full front soft lining.



19
37
260

COMPOSITION:

Meryl 92% Polyamide Meryl
8% Elastane

SIZES: 4-6-8-10-12-XS-S-M-L-XL-XXL

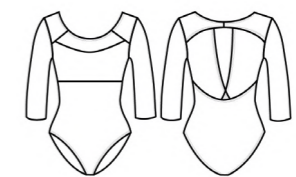


Fiona

31703

Maillot de manga 3/4 combinado con red a tono en el escote, espalda y mangas. Con abertura en la espalda cerrada con corchete. Forro delantero de tacto suave.

3/4 sleeve leotard combined with matching mesh at the neckline, back and sleeves. Open back style buttoned with a hook and eye. Full front soft lining.



19	
37	
260	

COMPOSITION:

Meryl 92% Polyamide Meryl
8% Elastane

SIZES: 4-6-8-10-12-XS-S-M-L-XL-XXL



Sweet Twist collection

31697

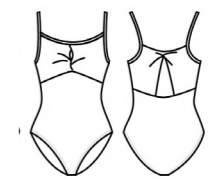


Fauna

31697

Maillot con tirantes finos y detalle de nudo en el delantero y la espalda. Diseño con aberturas y forro delantero de tacto suave.

Leotard with thin straps, featuring knot details. Designed with front and back openings. Full front soft lining.



- 15
- 37
- 80
- 249
- 253

COMPOSITION:

Meryl 92% Polyamide Meryl
8% Elastane

SIZES: 4-6-8-10-12-XS-S-M-L-XL-XXL



31698
7007

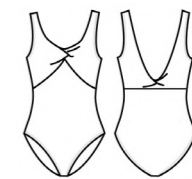


Fizza

31698

Maillot con tirantes anchos y detalle de nudo en el delantero y espalda. Diseño con espalda abierta en forma de pico. Forro delantero de tacto suave.

Leotard with wide straps and a knot detail on the front and back. Designed with a v-shaped open back. Full front soft lining.



- 15
- 37
- 80
- 249
- 253

COMPOSITION:

Meryl 92% Polyamide Meryl
8% Elastane

SIZES: 4-6-8-10-12-XS-S-M-L-XL-XXL



31699



Fenix

31699

Maillot de cuello cerrado sin mangas con doble abertura en la espalda y detalle cruzado con nudo. Cierre de corchete y forro delantero de tacto suave.

Round neckline sleeveless leotard with a double open-back design and a crossed knot detail. Buttoned with a hook and eye. Full front soft lining.



15

37

80

249

253

COMPOSITION:

Meryl 92% Polyamide Meryl
8% Elastane

SIZES: 4-6-8-10-12-XS-S-M-L-XL-XXL

SWEET TWIST COLLECTION 31



6643
7007



Flavia

6643

Chaqueta cruzada de manga larga fabricada en tejido Meryl. Se puede anudar en la espalda o en la parte delantera.

Long-sleeved crossover made of Meryl fabric. Can be tied at the back or front.



- 37
- 52
- 108

COMPOSITION:

Meryl 92% Polyamide Meryl
8% Elastane

SIZES: 4-6-8-10-12-XS-S-M-L-XL-XXL

Quiet Elegance collection



31700



Farah

31700

Maillot de tirantes con escote fruncido y abertura en la espalda en forma de V con fruncido. Forro delantero de tacto suave.

Tank leotard with a ruffled neckline and V-shaped back opening with a ruche. Full front soft lining.



01

37

172

275

COMPOSITION:

Meryl 92% Polyamide Meryl
8% Elastane

SIZES: 4-6-8-10-12-XS-S-M-L-XL-XXL

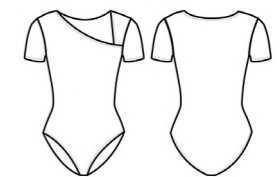


Filippa

31701

Maillot de manga corta con corte asimétrico en el cuello. Forro delantero de tacto suave.

Short-sleeved leotard with an asymmetrical neckline. Full front soft lining.



01

37

172

275

31701
7741

COMPOSITION:

Meryl 92% Polyamide Meryl
8% Elastane

SIZES: 4-6-8-10-12-XS-S-M-L-XL-XXL

QUIET ELEGANCE COLLECTION 37



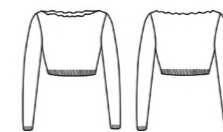
Charming Braid

collection

6647
7011
2044



Fedora



6646

Jersey corto de manga larga tipo raglán con cuello barco de punto trenzado. Tejido de tacto suave y cálido.

Cropped raglan long-sleeve sweater with a boat neckline made of twisted stitch. Soft and warm fabric.



Freya



6647

Chaqueta corta cruzada anudada de punto trenzado. Tejido de tacto suave y cálido.

Cropped wrap crossover with a knot made of twisted stitch. Soft and warm fabric.

03 37 33 194

COMPOSITION:

52% Viscose / 28% Polyester / 20% Polyamide

SIZES: 10/12 - S/M - L/XL



6646
7011
2044



Francis 

5557

Shorts con cinturilla elástica de punto trenzado. Tejido de tacto suave y cálido.

Short pants with an elastic waistband made of twisted stitch. Soft and warm fabric.

SIZES: 10/12 - S/M - L/XL

Faith 

2044

Calentadores de punto trenzado. Tejido de tacto suave y cálido.

Leg warmers made of twisted stitch. Soft and warm fabric.

SIZE: M (≈55cm)

Fernande 

5556

Pantalón recto largo de punto trenzado con cinturilla elástica. Tejido de tacto suave y cálido.

Long straight pants made of twisted stitch with an elastic waistband. Soft and warm fabric.

SIZES: 10/12 - S/M - L/XL

03 37 33 194

COMPOSITION:

52% Viscose / 28% Polyester / 20% Polyamide



6642
7011
2034

Bamboo collection

NATURAL FIBER

NEW STYLE



Felisa

6642

Jersey cruzado corto de manga larga, fabricado con fibras naturales de **Bamboo**.

*Cropped long-sleeve wrap jersey made from natural **Bamboo** fibers.*



- 01
- 02
- 07
- 15
- 21
- 29
- 27
- 33
- 37

COMPOSITION:

bamboo natural fiber 90% Bamboo
10% Elastane

SIZES: 4-6-8-10-12-S-M-L-XL



31710
2041

NEW STYLE

NATURAL FIBER

NEW COLOURS



Francisco

2041

Calentadores largos con agujero en el talón fabricados con fibras naturales de **Bamboo**.

*Long stirrup leg warmers made of **Bamboo** natural fibers.*

SIZE: M (≈80cm) Pack 3 pairs



Delphinia

2035

Calentadores largos fabricados con fibras naturales de **Bamboo**.

*Long leg warmers made of **Bamboo** natural fibers.*

SIZE: M (≈65cm) Pack 3 pairs



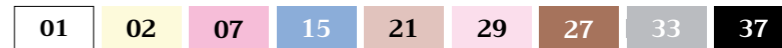
Danae

2034

Calentadores cortos fabricados con fibras naturales de **Bamboo**.

*Short leg warmers made of **Bamboo** natural fibers.*

SIZE: M (≈50cm) Pack 3 pairs



COMPOSITION:

bamboo natural fiber 90% Bamboo
10% Elastane



6620
2041

NATURAL FIBER
NEW COLOURS



Donatella

6620

Jersey corto de manga 3/4 y escote barco fabricado con fibras naturales de **Bamboo**.

3/4 sleeves board neck crop sweater made of **Bamboo** natural fibers.

SIZES: 10-S-M-L



- 01
- 02
- 07
- 15
- 21
- 29
- 27
- 33
- 37

COMPOSITION:
 90% Bamboo
 natural fiber 10% Elastane



NATURAL FIBER
NEW COLOURS

31699
6619
5541



Darcy

6619

Bolero de manga larga con ojal para introducir el dedo. Fabricado con fibras naturales de **Bamboo**.

Long sleeve shrug with thumb holes. Made of **Bamboo** natural fibers.

SIZES: 10-S-M-L



Diletta

4694

Mono entero largo de tirantes fabricado con fibras naturales de **Bamboo**.

Catsuit made of **Bamboo** natural fibers. Upper body featured with a ribbed stitch.

SIZES: 10-S-M-L



- 01
- 02
- 07
- 15
- 21
- 29
- 27
- 33
- 37

COMPOSITION:
bamboo natural fiber 90% Bamboo
10% Elastane



31699
6619
5541

NATURAL FIBER

NEW COLOURS



Dotti

5540

Shorts de cintura alta fabricados con fibras naturales de **Bamboo**.

Short pants made of **Bamboo** natural fibers.

SIZES: 10-S-M-L



Daphne

5541

Pantalón largo de cintura alta fabricado con fibras naturales de **Bamboo**.

Long high-waisted pants made of **Bamboo** natural fibers.

SIZES: 10-S-M-L



COMPOSITION:

bamboo natural fiber 90% *Bamboo* 10% *Elastane*

Adel collection



31703
5297

NEW COLOURS

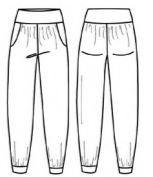


Panadelpoc

5297

Pantalón de tejido no transpirable con bolsillos. Con cinturilla y dobladillos elásticos.

Perspiration pants with pockets. Elastic hems and roll down waistband.



- 03
- 19
- 37
- 126
- 253
- 258
- 260
- 275

COMPOSITION:

ADEL 100% Polyester

SIZES: 4-6-8-10-12-XS-S-M-L-XL-XXL

Accessories



6642
9112



Fenella

9112

Bolsa brillante con logo de Intermezzo. Con bolsillos interior y exterior. Cierre de cremallera. Asa corta para el hombro y asa larga para llevarla cruzada.

Shiny bag with Intermezzo logo. Inside and outside pockets. Zipper closure. Short handle for the shoulder and long handle for crossbody wear.



07

24

37

COMPOSITION:

100% Polyester

SIZE M: 52 x 30 x 17 cm.

Shoulder strap length: 40 cm.

Index



2034 DANAE Bamboo Collection
Short Leg warmers
SIZE M
P. 45

01, 02, 07,
15, 21, 29,
27, 33, 37



31702 FEDERICA Eclipse Collection
Camisole leotard
SIZES 4-XXL
P. 23

19 navy blue
37 black
260 dahlia



2035 DELPHINIA Bamboo Collection
Long Leg Warmers
SIZE M
P. 45

01, 02, 07,
15, 21, 29,
27, 33, 37



31703 FIONA Eclipse Collection
3/4 sleeve leotard
SIZES 4-XXL
P. 25

19 navy blue
37 black
260 dahlia



2041 FRANCISCO Bamboo Collection
Long Leg warmers
SIZE M
P. 45

01, 02, 07,
15, 21, 29,
27, 33, 37



31704 FORTUNATA Camellia Collection
Camisole leotard
SIZES 8-XXL
P. 5

37 black
52 mink
108 salmon
275 garnet



2044 FAITH Charming Braid Collection
Short Leg warmers
SIZE M
P. 41

03 beige
33 grey
37 black
194 violet



31705 FRANCESCA Camellia Collection
Halter leotard
SIZES 8-XXL
P. 7

37 black
52 mink
108 salmon
275 garnet



31697 FAUNA Sweet Twist Collection
Camisole leotard
SIZES 4-XXL
P. 27

15 light blue
37 black
80 lavender
249 rose
253 pansy purple



31706 FABIOLA Camellia Collection
Tank leotard
SIZES 8-XXL
P. 9

37 black
52 mink
108 salmon
275 garnet



31698 FIZZA Sweet Twist Collection
Tank leotard
SIZES 4-XXL
P. 29

15 light blue
37 black
80 lavender
249 rose
253 pansy purple



31707 FINA Camellia Collection
Tank leotard
SIZES 8-XXL
P. 11

37 black
52 mink
108 salmon
275 garnet



31699 FENIX Sweet Twist Collection
Tank leotard
SIZES 4-XXL
P. 31

15 light blue
37 black
80 lavender
249 rose
253 pansy purple



31708 FLORINDA Petite Fleur Collection
Camisole leotard
SIZES 8-XXL
P. 15

15 light blue
37 black
260 dahlia



31700 FARAH Quiet Elegance
Collection
Camisole leotard
SIZES 4-XXL
P. 35

01 white
37 black
172 charcoal grey
275 garnet



31709 FELICITY Petite Fleur Collection
Cap sleeve leotard
SIZES 8-XXL
P. 17

15 light blue
37 black
260 dahlia



31701 FILIPPA Quiet Elegance Collection
Cap sleeve leotard
SIZES 4-XXL
P. 37

01 white
37 black
172 charcoal grey
275 garnet



31710 FRIDA Petite Fleur Collection
3/4 sleeve leotard
SIZES 8-XXL
P. 19

15 light blue
37 black
260 dahlia



4694 DILETTA Bamboo Collection
Unitard
SIZE 10/S/M/L
P. 49

01, 02, 07,
15, 21, 27,
29, 33, 37



6642 FELISA Bamboo Collection
Crossover
SIZES 4-XL
P. 43

01, 02, 07,
15, 21, 27,
29, 33, 37



5297 PANADELPOC Adel Collection
Long pants
SIZES 4-XXL
P. 53

03, 19, 37,
126, 253, 258,
260, 275



6643 FLAVIA Sweet Twist Collection
Crossover
SIZES 4-XXL
P. 33

37 black
52 mink
108 salmon



5540 DOTTI Bamboo Collection
Shorts
SIZE 10/S/M/L
P. 51

01, 02, 07,
15, 21, 27,
29, 33, 37



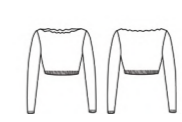
6645 FIORE Petite Fleur Collection
Long sleeve Top
SIZES 8-XXL
P. 21

15 light blue
37 black
260 dahlia



5541 DAPHNE Bamboo Collection
Long pants
SIZE 10/S/M/L
P. 51

01, 02, 07,
15, 21, 27,
29, 33, 37



6646 FEDORA Charming Braid Collection
Sweater
SIZES 10-12/S-M/L-XL
P. 39

03 beige
33 grey
37 black
194 violet



5556 FERNANDE Charming Braid Collection
Long pants
SIZES 10-12/S-M/L-XL
P. 41

03 beige
33 grey
37 black
194 violet



6647 FREYA Charming Braid Collection
Crossover
SIZES 10-12/S-M/L-XL
P. 39

03 beige
33 grey
37 black
194 violet



5557 FRANCIS Charming Braid Collection
Shorts
SIZES 10-12/S-M/L-XL
P. 41

03 beige
33 grey
37 black
194 violet



7011 FIDELIA Camellia Collection
Wrap Skirt
SIZES 4-XL
P. 13

02 ivory
37 black
260 dahlia



6619 DARCY Bamboo Collection
Shrug
SIZE 10/S/M/L
P. 49

01, 02, 07,
15, 21, 27,
29, 33, 37



7012 FLOR Petite Fleur Collection
Skirt
SIZES 8-XXL
P. 21

15 light blue
37 black
260 dahlia



6620 DONATELLA Bamboo Collection
Sweater
SIZE 10/S/M/L
P. 47

01, 02, 07,
15, 21, 29,
27, 33, 37



9112 FENELLA Accessories Collection
Sport Bag
SIZE M
P. 55

07 pink
24 lilac
37 black

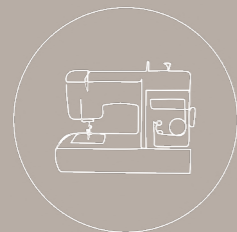
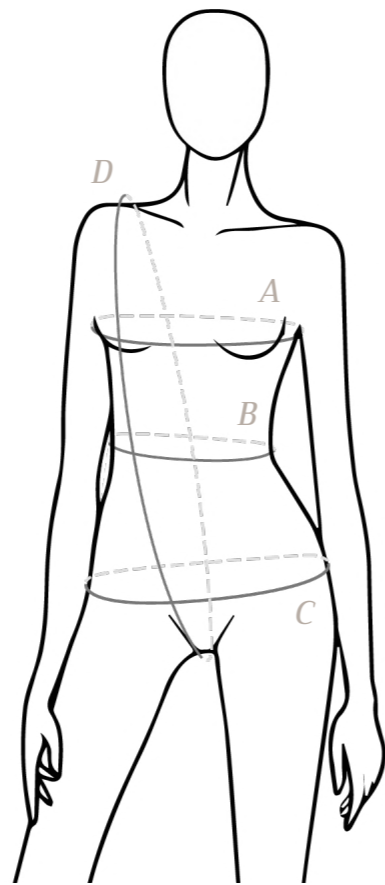
Size Guide

Mujer / Women

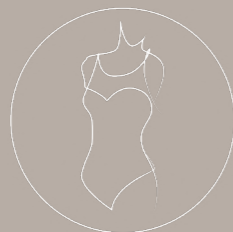
TALLA / SIZE		XS	S	M	L	XL	XXL
A	Pecho / Chest	(cm.) 76-81	82-87	88-91	92-98	99-105	106-113
		(in.) 30-32	32-34	34-36	36-38	38-42	42-44
B	Cintura / Waist	(cm.) 56-63	62-69	68-73	72-79	78-87	86-93
		(in.) 22-26	24-27	26-29	28-31	30-34	33-36
C	Cadera / Hip	(cm.) 84-89	89-94	94-99	99-105	105-110	111-118
		(in.) 33-35	35-37	37-39	39-41	41-43	43-46
D	Tiro / Girth	(cm.) 132-140	140-148	148-155	156-160	159-165	165-173
		(in.) 52-55	55-58	58-61	61-63	62-65	65-68

Infantil / Children

TALLA / SIZE		4	6	8	10	12
Edad / Age		3-4	5-6	7-8	9-10	11-12
Estatura / Height	(cm.)	90-105	106-117	118-129	130-141	142-152
	(in.)	35-41	41-46	46-51	51-55	55-60
Peso / Weight	(kg.)	12-19	18-25	24-31	30-35	36-44
	(lb)	26-41	39-55	54-68	66-78	79-97



Locally Made



European Fabrics



Ethical Business



Conscious Fashion

Follow Us
@intermezzodance



im

intermezzo

MALLTEX, S.A.
Borges Blanques, 86
08227 Terrassa, Barcelona - Spain

intermezzodancewear.com
Phone (+34) 93 735 07 52 / (+34) 660 55 52 26
info@intermezzo.es



INNOVATIVE SME
Valid until Nov 22nd 2025

